

E2U
EPOXY2U™



MASTER PRODUCT CATALOG

EASY
INSTALL
FAST
CURE
WARRANTY
E2U
B81 GHF 5@
EPOXY2U
ONE-DAY
BEAUTIFUL
DECORATIVE
GARAGE
STREET

FORMULATING YOUR SUCCESS



ABOUT E2U

Epoxy2U is a liquid polymer production and manufacturing company located in Phoenix, Arizona, USA. We manufacture all our products using only the highest premium ingredients and quality materials. Our products can be used in decorative coatings, concrete repair compounds and a wide range of chip, quartz, and broadcast systems giving years of beautiful surface protection. At Epoxy2U, our continued product development is based on decades of on-site experience offering helpful, practical advice and delivering economical solutions to fulfill the varied needs of our customers.

Epoxy2U is committed to being up to date with “state-of-the-art” technology. This places Epoxy2U in the direct spotlight, as a world-wide, liquid polymer, market leader. The resins and other pertinent ingredients used in Epoxy2U coatings and pigment systems are sourced through leading manufacturers all over the globe. Our scope of products has been thoroughly proven over the years with on-site applications and an extensive list of satisfied customers.

OUR MISSION

To provide the best product on the market and always following up with the best possible customer service. Our success is your success.

We strive to be the leading manufacturer of residential & commercial flooring systems, providing the best professional product training classes from our corporate warehouse in Phoenix, AZ. Not only are we committed to continually provide top-quality flooring products formulated with the industry's leading techniques and ingredients, but we are also dedicated to the success of our customers!

We don't just make the products, we are committed to our customer's success, we teach you how to use our products. You've got the tools, learn how to use them! Epoxy2U system formulas can be "tailored-to-fit", suiting customer specific epoxy needs.

All Epoxy2U products are manufactured and sourced with stringent quality control standards. Key Epoxy2U products undergo constant quality-control and testing to improve the formulations, which greatly increase the performance of our products. This guarantees quality in our products. Quality that is up to par with the highest of standards that our customers have come to expect when they see the Epoxy2U brand label.

The Epoxy2U warehouse and distribution facility maintains a large stock of inventory to ensure quality-control fulfillment levels coupled with efficient order turnaround times.

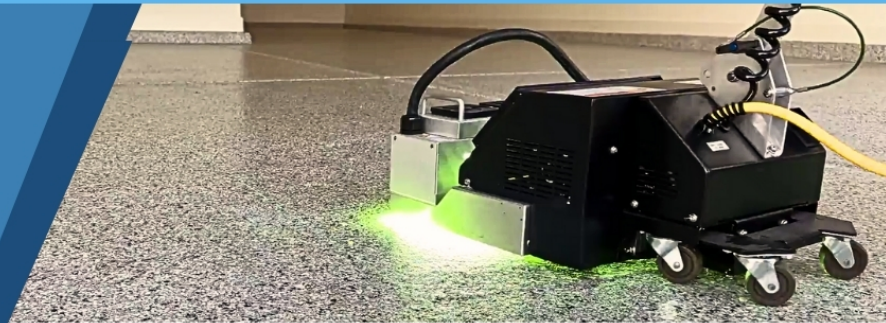




Advanced UV Topcoat Technology

SUPERIOR CHEMICAL AND ABRASION RESISTANCE

- Easy Application
- Cures in Seconds
- Non-Yellowing
- Extremely Durable
- Virtually NO ODOR
- Stain Resistance



SCAN THE QR CODE TO FIND
OUT MORE INFORMATION

 www.E2-UV.com



Same day return service

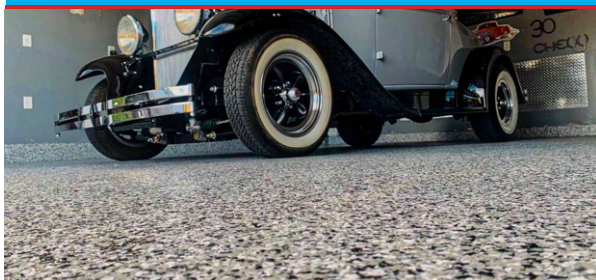
E2U TRAINING CLASSES

We train you to become Epoxy Application Specialists. We offer training classes, led by industry experts, to teach individuals & businesses how to choose the correct products & application techniques. Learn all the insider tips and tricks to get your job done right!

Learn various application styles, proper uses of tools/sundries, see live-and-in-person how to mix & pour metallic epoxy, flake systems including our popular one-day garage system, waterbased epoxy & polymer concrete. Our classes also cover grinders & tooling, surface prep for cracks, spalls & joints, a Q&A session, and advice for how to best sell floors and what to watch out for as an installer.

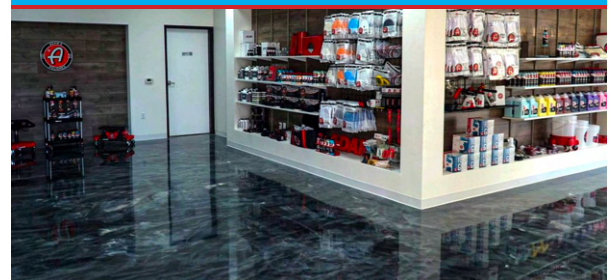


FLAKE SYSTEMS - GARAGES



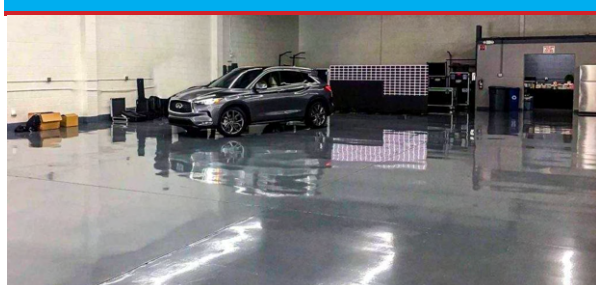
E2U One-Day Garage System is easy to install, affordable and offers quality floors to your customers. E2U 6150 has an excellent adhesion, hide, and low-viscosity.

METALLIC EPOXY SYSTEM



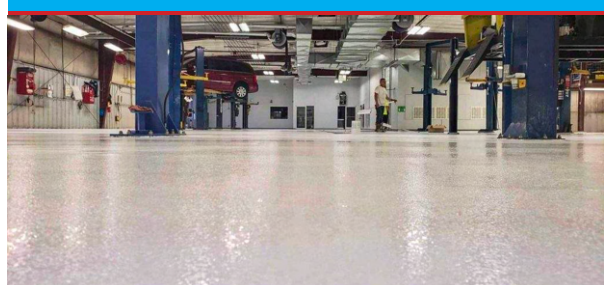
A three-component high-performance, decorative epoxy floor coating system with excellent flowability and self-leveling characteristics.

WATERBASED EPOXY



A premium quality, 2-component waterbased epoxy sealer/primer that combines epoxy toughness, chemical resistance, and durability.

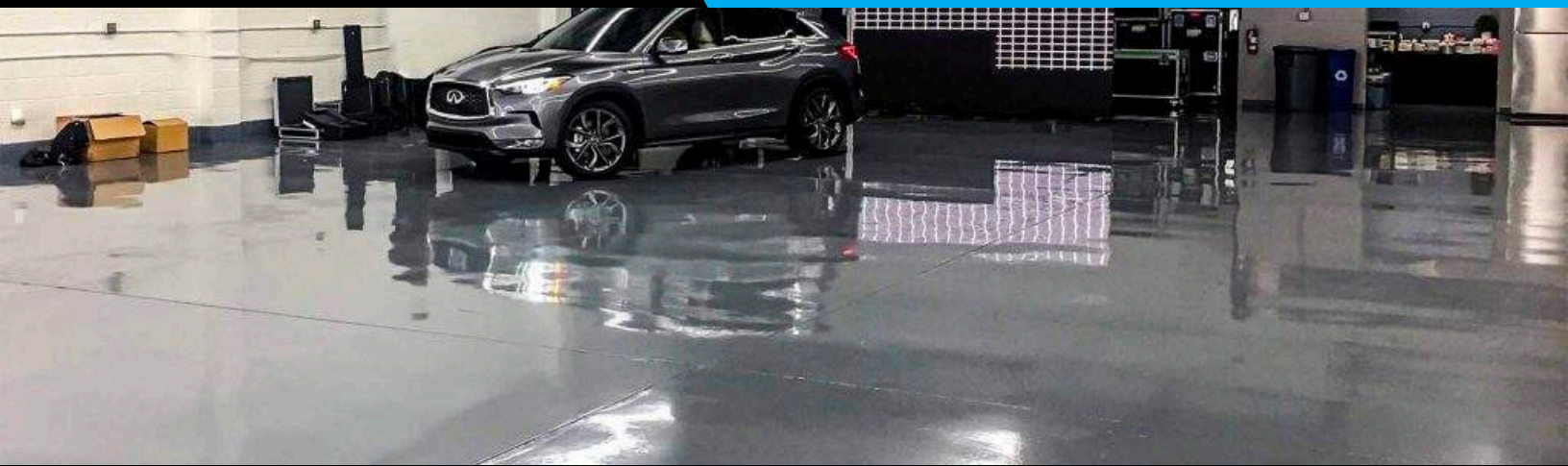
POLYMER CONCRETE/URETHANE CEMENT



Protect concrete from physical and chemical damage, highly impact & abrasion resistant, unaffected by animal fats and most solvents.

Ready to learn from the pros?

Visit e2u.com/EDU to sign up for our next class!



EPOXY 6150/6150RC/6150S

Available in 2 and 15 gallon kits



E2U Epoxy 6150 is VOC-compliant, high solids, 2-component, and designed as a base coat for color flake (chip) flooring. This application can be applied to new and existing concrete. Our Epoxy 6150 formula allows a typical floor to be installed within one day and provides excellent adhesion and hide to concrete in a single coat application. Epoxy 6150 withstands up to 9 lbs of moisture vapor emissions when used on residential garage floor. Epoxy 6150 adheres to damp or dry concrete and gives ample open time for broadcasting the color flakes (chips). Adding E2U Accelerator will speed up a dry time to as little as 2 hours.

Product Type: Rapid Cure & Slow Cure Available

Coverage Rate: 200-225 sq. ft./gal. at 8 mil.

EPOXY 4500 UV RESISTANT

Available in 3 and 15 gallon kits



E2U Epoxy 4500 is a two component, 100% solids, zero-VOC, high performance modified cycloaliphatic epoxy concrete floor coating system. Its epoxy chemistry provides excellent bonding characteristics. **E2U Epoxy 4500** is UV resistant and essentially odorless. It has a long working time, high gloss, color stability, and excellent self-leveling additives.

Product Type: Clear & Pigmented Formulas Available

Coverage Rate: 100 sq. ft./gal. at 16 mil.

200 sq. ft./gal. at 8 mil.

EPOXY 100% SOLIDS

Available in 3 and 15 gallon kits



E2U 100% Solids Epoxy is a 2-component, high performance, modified cycloaliphatic epoxy concrete floor coating system. This particular epoxy has features for high-gloss, low odor, solvent-free, low viscosity, low abrasion, and chemical resistance. It has excellent bonding characteristics and it can be applied as a 20-30 mil coating system. Chips or Silica Sand can be broadcast into this epoxy to create a custom look. Its design features provide for the highest industrial and commercial demands.

Product Type: Clear & Pigmented Formulas Available

Coverage Rate: 100 sq. ft./gal. at 16 mil.

200 sq. ft./gal. at 8 mil.

METALLIC EPOXY LV

Available in 1.5, 3, and 15 gallon kits



E2U Metallic Epoxy LV has 45-60 minutes working time and due to its extremely low viscosity it has excellent flow-ability and self-leveling properties. Its epoxy chemistry provides excellent bonding characteristics and is typically applied at a 20 mil thick single coat (50-60 sq. ft. gal).

This dynamic blend does **NOT** require activator to be sprayed on the surface to obtain a unique and highly decorative look. **E2U Metallic Pigment** allows you to easily add reflective metallic color to your clear Metallic Epoxy to create beautiful, high gloss metallic epoxy finishes.

Coverage Rate: 50 sq. ft./gal. at 20 mil.

WATERBASED EPOXY

Available in 1.25 and 5 gallon kits



E2U Waterbased Epoxy Kit is a premium quality, 2-component waterbased epoxy sealer/primer that combines epoxy toughness, chemical resistance, and durability with the convenience of a waterbased VOC free system. **E2U Waterbased Epoxy** provides excellent substrate penetration and is a suitable primer for most epoxies, urethanes, polyureas, and polyaspartic polyureas.

Product Type: Clear & Pigmented Formulas Available

Coverage Rate: 300-400 sq. ft./gal.

HIGH CHEM EPOXY™

Available in 3 and 15 gallon kits



E2U High-Chem Epoxy is a two component, high performance modified cycloaliphatic epoxy concrete coating system. Its epoxy chemistry provides excellent bonding characteristics and can be applied at 20 to 50 mils. Sand can be broadcast into **E2U High-Chem Epoxy** to create a superior inner layer adhesion. Its design features provide for the highest industrial and commercial demands. As a primer, you will see superior adhesion and strength. Excels in extreme chemical resistance where daily "spill & clean" of some of the harshest chemicals are used.

Product Type: Clear & Pigmented Formulas Available

FLEX EPOXY

Available in a 15 Gallon Kit



E2U Flex Epoxy is a two component, high performance, modified cycloaliphatic epoxy concrete floor coating system. It has exceptional elongation properties. **E2U Flex Epoxy** provides a crack resistant, resilient, sound absorbent, waterproof, durable floor. It can be applied as a 12 to 50 mil coating system. Its design features provide for the highest industrial and commercial demands.

Product Type: Clear & Pigmented Formulas Available

NOVOLAC EPOXY

Available in 3 and 15 gallon kits



E2U Novolac Chemical Resistant Epoxy kit is a two component, 100% solids epoxy and extremely chemical-resistant to many acids, alkali, and other harsh chemicals. It can be applied in cool damp conditions as well as can be used in areas that are subject to extreme heat. Silica, sand, or color quartz can be broadcast into **E2U Novolac Epoxy**. It can be used on new floors as well as for refurbishing existing surfaces.

Product Type: Chemical Containment Formula / Clear & Pigmented Formulas Available

Coverage Rate: 100 sq. ft./gal. at 16 mil.

EPOXY ACCELERATOR

Available in 16oz and 1 gallon cans



E2U Epoxy Accelerator is a special additive for use with epoxies (100% Solids Epoxy, Epoxy 6150 & Moisture Vapor Barrier Epoxy) to accelerate the cure rate and allow for coating application at temperatures down to 35 F (2 C). **E2U Epoxy Accelerator** is an additive to be used in both clear, and pigmented epoxies. NOTE: **E2U Epoxy Accelerator** greatly increases the cure rate of these systems, reducing work time, dry time and eliminates any re-coat window.

MOISTURE VAPOR BARRIER 15 (MVB 15)

Available in 3 and 15 gallon kits



E2U Moisture Vapor Barrier (MVB15) kit is a slow curing, VOC-compliant, two component, 100% Solids Epoxy System for concrete substrates. **MVB15** is a moisture vapor barrier that reduces the permeance of moisture vapor levels that are acceptable for the application of flooring installation systems and floor coverings. It is compatible with most flooring adhesives and cementitious underlayments, including all **E2U** adhesives, primers and underlayments.

Product Type: Clear & Pigmented Formulas Available

Coverage Rate: 100 sq. ft./gal. at 16 mil.

SUPERIOR COUNTERTOP EPOXY

Available in 1.5, 3 and 15 Gallon Kits



E2U Superior Countertop Epoxy is a high performance, self-leveling, zero VOC and extremely durable with seamless finish. It provides beautiful and elegant look to concrete, wood, metal and various other substrates. Typically applied at a 22-25 mil thick single coat (50 SF/gal). It meets USDA requirements for incidental food contact. This material cures brush-free and provides an outstanding balance of physical strength and flexibility.

Coverage Rate: 50 sq. ft./gal. at 24 mil.



CLEAR ART EPOXY - CASTING

Available in 3 Gallon Kit



E2U Clear Art (Casting Epoxy) is a two component, high performance, modified cycloaliphatic epoxy decorative pouring system. **E2U Clear Art (Casting Epoxy)** features for high-gloss, low odor, solvent-free, extremely durable, and UV resistance. It offers ultra-clear finish and can be applied up to 4" thick. **E2U Clear Art (Casting Epoxy)** is ideal for river tables, countertops, live edge tables, bar tops & more.

Coverage Rate: 12 sq. ft./gal. at 1/8"

STEM COAT

Available in 1 and 5 gallon pails



E2U Stem Coat is a single component, acrylic modified, pigmented coatig, specifically designed to be applied to garage floor stem walls. Excellent adhesion, fast drying, and thickened to not sag when being brushed or rolled vertically on the stem walls immediately prior to being coated with the decorative flake system.

Available Colors: Lt. Gray & Beige

POLYASPARTIC ULTRA (LOW ODOR)

Available in 1.5, 2 and 10 gallon kits



E2U Polyaspartic Ultra - "It has essentially zero odor!" Our **Poly Ultra** is the next generation of two-component, high solids aliphatic polyaspartic. It is 4x more durable than epoxy. It has excellent resistance to a broad range of chemicals such as inorganic acids, alkalis, amines, salts and solvents. **E2U Polyaspartic Ultra's** formula provides non-yellowing and long-term gloss retention for interior & exterior applications. It is a low VOC, low viscosity, flexible system, that is easy to apply. Generally return to service in 24 hours.

Product Type: Satin Formula Available | Pigment Packs Sold Separately

Coverage Rate: Coverage Rate: 100 - 200 sq. ft./Gal

Varies depending on the type of surface applied to. For questions or compatibility concerns please contact technical support: 855-376-9928,

POLYASPARTIC ULTRA RC & XRC

Available in 1.5, 2 and 10 gallon kits



E2U Polyaspartic Rapid Cure is a fast-drying, two-component aliphatic polyaspartic coating designed to coat concrete floors. It provides incredible abrasion & chemical resistance. It protects substrates from chemical spills and corrosion and withstands heavy use. **E2U Polyaspartic Rapid Cure** formula can be applied at the freezing temperature. It is non-yellowing with long-term gloss retention for interior & exterior applications. The cure time is 2-to-3 hours. XRC (Extreme Rapid Cure) cure time of 45-90min.

Pigment Packs Sold Separately

Coverage Rate: Coverage Rate: 100 - 200 sq. ft./Gal

Varies depending on the type of surface applied to. For questions or compatibility concerns please contact technical support: 855-376-9928,

SLOW CURE POLYASPARTIC

Available in 2 and 10 gallon kits



E2U SLOW CURE Polyaspartic is a durable, long lasting, high solids flexible, UV resistant coating. Our formula provides non-yellowing and long-term gloss retention. It's specifically formulated to offer a protection from fading, chemicals, stains and abrasion. It provides a long term resistance against chemicals, abrasion, and stains.

Coverage Rate: Coverage Rate: 100 - 200 sq. ft./Gal

Varies depending on the type of surface applied to. For questions or compatibility concerns please contact technical support: 855-376-9928,

POLYASPARTIC SKYDROL RESISTANT

Available in 2 and 10 gallon kits



E2U Skydrol Resistant Polyaspartic is the extremely high performance aliphatic polyaspartic. It has excellent penetration and bond strength to surfaces. It features excellent abrasion, impact, and wear resistance and it is highly chemical resistant to hydraulic fluids. It has cure time of 4-6 hours. It can be installed in extremely high or low temperatures. Designed for application in airplane hangers to resist against " Skydrol Hydraulic Fluids" that can leak out. It is the ideal product when low odor, fast turn around, and a non-yellowing system are essential.

Pigment Packs Sold Separately

Coverage Rate: Coverage Rate: 100 - 200 sq. ft./Gal

Varies depending on the type of surface applied to. For questions or compatibility concerns please contact technical support: 855-376-9928,

WATERBASED URETHANE

Available in 1 and 4 gallon kits



E2U Waterbased Urethane is a premium, two-component urethane that provides superior performance to polyaspartic without any odor, health or environmental issues. **E2U Waterbased Urethane** is VOC compliant. It gives hard, durable coatings that features good gloss, superior abrasion resistance and UV resistance. **E2U Waterbased Urethane** has been formulated to offer a high performance finish coat for seamless flooring, coating and architectural concrete applications where odor & health concern are sensitive.

Product Type: Gloss or Matte Formula Available
Coverage Rate: 300-400 sq. ft./gal.

URETHANE 321 TOP COAT

Available in 1 gallon kits



E2U Urethane 321-200 is a three-component aliphatic urethane floor finish. It exhibits excellent characteristics for abrasion and chemical resistance, flexibility, weathering, UV stability, and has an excellent coverage rate. The combination of A, B, and C components The combination of A, B, and C components will result in a satin (semi-gloss) finish.

Pigment Packs Sold Separately
Coverage Rate: 550-600 sq. ft./gal.

CHEMICAL RESISTANT URETHANE

Available in 15 gallon kits



E2U Chemical Resistant Urethane (CRU) is designed for speedy turnaround. **E2U CRU** has a pot life up to 90 minutes in real world conditions, yet it dries in 30 minutes or less after it is applied to concrete. **E2U CRU** will provide an extremely high-gloss look due to its ability to dive deep into the concrete surface. **E2U CRU** has excellent chemical resistance, abrasion resistance, and UV stability with low-viscosity.

Coverage Rate: 250-300 sq. ft./gal. at 3-5 mils.

POLYMER CONCRETE (URETHANE CEMENT)

Available in 61 lb. kit



E2U Polymer Concrete Urethane Cement is a flowable polyurethane concrete installed at 1/8" to 1/4" to protect concrete from physical and chemical damage. It is highly impact & abrasion resistant. It is unaffected by animal fats and most solvents and chemicals. **E2U Polymer Concrete** has a thermal expansion and contraction similar to concrete which allows it to maintain adhesion when subject to hot pressure washes. It can be used at constant service temperatures up to 220 F. **E2U Poly-mer Concrete** is fast-cure and usually installed without a primer or topcoat and can be returned to service 12-24 hours after installation.

Coverage Rate: Will vary depending on the thickness applied per kit - 1/4" = 26 sq. ft./kit

FLOOR CLEANER PRO - CONCENTRATED

Available in 1 gallon



E2U Floor Cleaner Pro is a non-acidic, alkaline-based cleaner and brightener containing the best available biodegradable surfactants and detergents package to quickly penetrate and remove greasy soils and oxidation. It's formula helps lift greasy soils out of systems leaving surfaces clean and bright. DOES NOT CONTAIN ACID.

WATERBASED ACRYLIC SEALER - WET LOOK!

Available in 1 and 5 gallon kits



E2U Waterbased Acrylic Sealer is a single-component. It is used as a protective coating over concrete, masonry, and wood substrates. It is a weatherproof sealer that is resistant to the sun, moisture, industrial chemicals, oil, grease, and most caustic cleaning agents. When properly applied, its exceptional penetrating properties will seal concrete and other surfaces keeping them easy to clean and maintain. **E2U Waterbased Acrylic Sealer** is highly UV stable and gives high-gloss on concrete. Multiple coats will increase the gloss to desired level. **E2U Waterbased Acrylic Sealer** will apply milky white to ensure complete coverage, but dries to a transparent, durable gloss finish.

Product Type: Solvenated Gloss Available
Coverage Rate: 250-300 sq. ft./gal.

POLYASPARTIC BASECOAT RC

Available in 2 Gallon Kit



E2U Polyaspartic Pigmented Basecoat RC the next generation of 2-component, fast-drying, high-solids, aliphatic Polyaspartic. E2U Polyaspartic-Basecoat RC formula provides long-term gloss retention for interior/exterior basecoat applications. It is the essential product when a project needs a fast turnaround, low VOC and flexible system. The cure time is 60 to 90 minutes. This product is designed to use as a basecoat only. This is an alternative product for E2U 6150RC in cold temperature applications.

Coverage Rate: 150-225 sqft/gal. at 8 mil.

COVE EPOXY

Available in 1.5 and 3 Gallon Kits



E2U Cove Base 100% solids pre-thickened epoxy. Specially formulated and designed for coving anywhere from 4 to 6 inches high. This product is designed to be non-shrink, non-sag giving a seamless floor to wall transition.

Coverage Rate: 232-37 Linear Ft. @ 4" H x 1/8" thick x 1" radius 30-35 Linear Ft. @ 6" H x 1/8" thick x 1" radius Based on a 3 quart mix (2 Parts A to 1 Part B)

RAPID MENDER

Available in 2 gallon kits



E2U Rapid Mender is a high strength, fast setting, two-component product designed for crack, spall, and joint filling needs. This very low-viscosity product is designed to be poured into profiled and cleaned imperfections in the host concrete prior to applying decorative coatings with VERY high bond strength and is generally ready to be ground flush with the surface in 20 minutes or less. Ideally mixed with two parts silica sand (generally 30-90 grit for smoother finishes) and 1 part of pre-mixed **E2U Rapid Mender**. This product will go a VERY long way.

Mult-Use C Blend Available

CRAZY BOND

Available in 2 gallon kits



E2U Crazy Bond Primer is the revolutionary primer and complete floor prep system in one. It bonds to virtually any surface including: epoxy, paint, asphalt, linoleum wood, metal, sealed concrete, ceramic tile, masonry and bituminous roofing. **E2U Crazy Bond Primer** cuts prep time, seals in slab laitance and reduces mess and demolition hazards. It will still bond if hydraulic fluid, grease and other hydrocarbon contaminants are within the concrete slab. **E2U Crazy Bond Primer** is non-toxic and environmentally friendly.

Coverage Rate: 100 sq. ft./gal.

POLYUREA CRACK REPAIR GUN

Available in 22oz kit with or w/o applicator



E2U Crack Repair Gun is our choice for a light weight highly efficient and durable product that you will need for doing crack repairs. This product will go a very long way is speeding up your productivity in large volume crack repair.

POLYUREA CRACK REPAIR - 22oz



E2U Crack Repair is a two-component, elastomeric sealing polymer system designed to act as a crack filler primarily in concrete. This material provides exceptional adhesion characteristics, fast cure times, and remains thermally stable in a range of -20 F (-29 C) to 250 F (125 C). It may be used under traditional floor coatings or any of our top-coating materials. **E2U Crack Repair** is used in heavy traffic warehouse floors, refrigeration floors, chemical spill prone floors, pothole road repair or under ceramic tile floors. It meets FDA regulations for indirect food contact (CFR 21, Sec. 175-300).

Coverage Rate: Approximately 25 LF @ 1/8"Wx1/8"D

SHS - Surfacing Honing Solution

Available in 1 & 5 gallon



E2U SHS: A surface honing solution with patented technology formula allowing you to prepare the surface in conjunction with grinding consumables by speeding up the process and ensuring the substrate is ready for polishing.

Coverage Rate: 500 sq. ft./gal.

DENSIFIER

Available in 1 & 5 gallon



E2U DENSIFIER: With innovative patented technology, this E2U Shine System product provides the ability to react and give the positive aspects of sodium, potassium and lithium silicates to deliver a surface that forms a crystalline structure, preventing dusting, heightening the resulting shine. A finished E2U Shine surface is breathable. Furthermore, it increases abrasion resistance which increases the durability of the shine.

Coverage Rate: 500-700 sq. ft./gal.

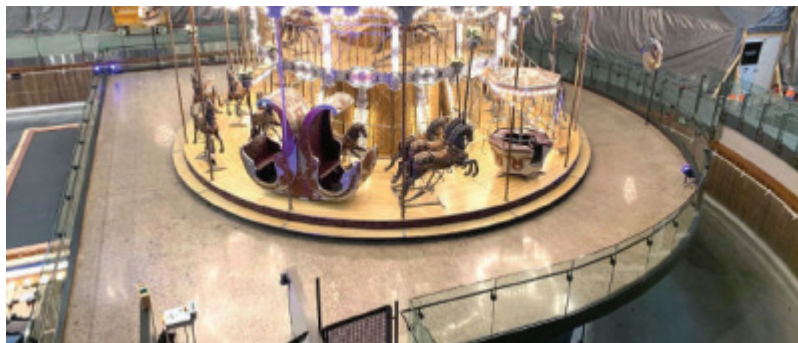
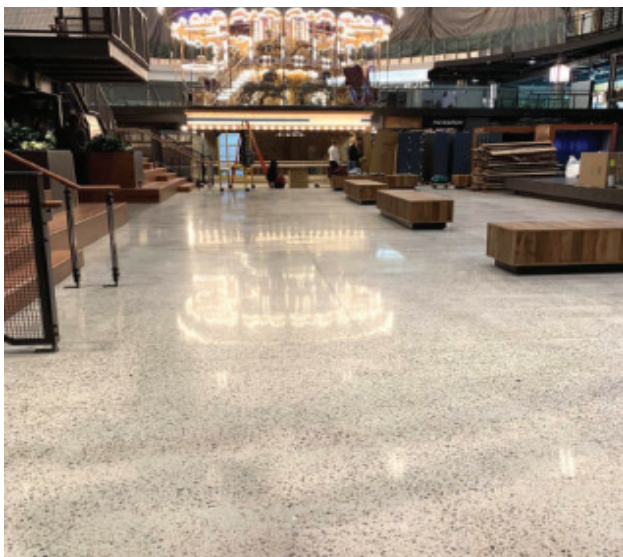
DEFENSE - GUARD

Available in 1 & 5 gallon



E2U DEFENSE: Most hard surfaces are prone to foreign particles and contaminants. Just like our skin, concrete and natural stone also have pores where dust particles and foreign spillage can seep right through. These particles can be detrimental to your hard surfaces structure as time goes on. This can result in staining. E2U Shine Defense is a penetrating product enhancing your surface's life. This can prevent chemical damage and permanent staining by holding spills close to the surface. It is more resistant to organic materials while still allowing the surface to breathe. E2U Shine Defense is a non-film forming product.

Coverage Rate: 1500 sq. ft./gal.





One Day Garage System

E2U One-Day Garage System is easy to install, affordable and offers quality floors to your customers. **E2U 6150** has an excellent hide, low-viscosity, great coverage, and accelerator is already built in! It withstands 9 lbs. of moisture vapor emission pressure when used on residential garage floors. **E2U 6150RC** cures in 1.5-2 hours and ready to recover flakes. Then it will be ready to seal your floor with high quality **E2U Polyaspartic 85 Ultra**.

Flake Color Options

The Epoxy2U Flake System offers a natural stone look for your epoxy, polyaspartic, polyurea, and urethane floor coating system. E2U Flake System is broadcast into a colored epoxy, polyurea, polyaspartic or urethane base-coat. E2U flake systems are sold in 25 lb. boxes. How much to use depends on the look desired. The more flakes used the less you see of the base coat color and more you see the flakes.



CALIFORNIA GRAY



TUXEDO



LIGHT GRAY



MEDIUM TAN



MIDNIGHT



HAZELNUT



SMOKE



SADDLE TAN

EPOXY COLOR CHART



WHITE



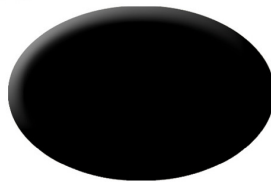
LIGHT GRAY



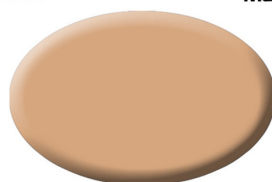
MEDIUM GRAY



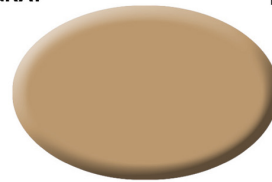
DARK GRAY



BLACK



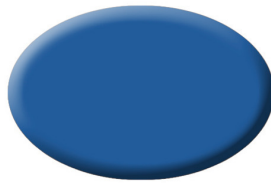
BEIGE



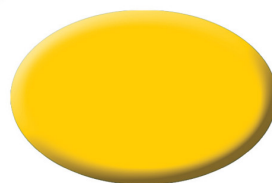
TAN



TILE RED



SAFETY BLUE



SAFETY YELLOW



SAFETY RED

***Safety colors are approximately 30% higher than standard colors.

FLAKE COLORS



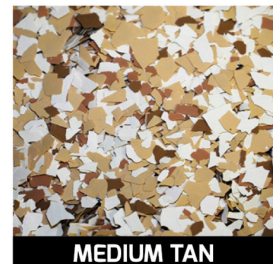
CALIFORNIA GRAY



TUXEDO



LIGHT GRAY



MEDIUM TAN



MIDNIGHT



HAZELNUT



SMOKE



SADDLE TAN

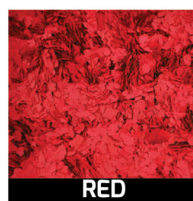
FLAKE ACCENT COLORS



BLUE



BROWN



RED



WHITE

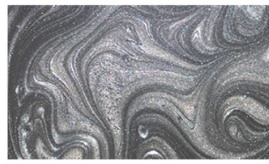


BLACK

E2U METALLIC COLOR CHART



Pearl



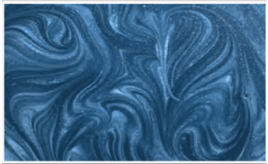
Silver



Titanium



Gun Metal



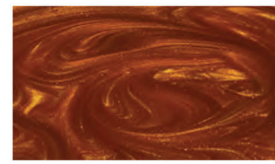
Cambridge Blue



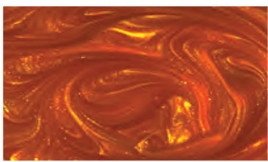
Ocean Blue



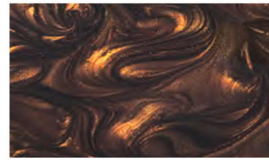
Sky Blue



Brass



Orange Gold



Chestnut



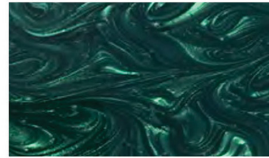
Copper



Violet



Purple



Forest Green



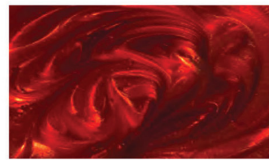
Green Apple



Magic Yellow



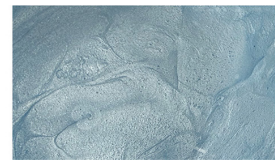
Orange Red



Wine Red



Emerald Green



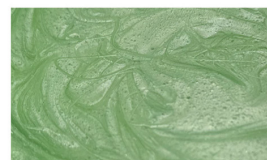
Wave Blue



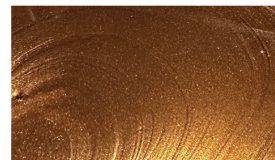
Butterscotch



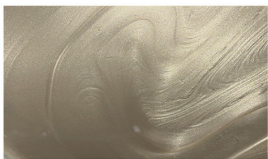
Pink



Mint Green



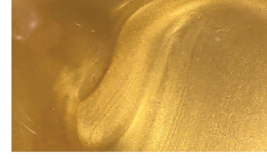
Rum



Sand



Bright White



Shimmer Gold



Earth Gray



Ultra Sparkle Glitter



Yellow Glow In The Dark

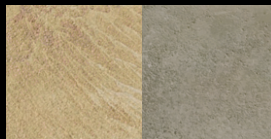


E2U DECORATIVE CONCRETE STAIN

E2U DECORATIVE CONCRETE STAIN is the most durable concrete stain flooring solution in the industry! We've taken over 50 years of flooring manufacturing experience into our new decorative concrete stain system. Our expert installers, trained for this unique system, give floors a beautiful hardwood flooring look with the strength and durability of epoxy flooring.

Standard Colors

LEFT = LIGHT BASE RIGHT = DARK BASE



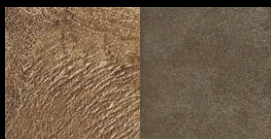
SAND



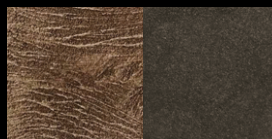
DESERT



BUFF



PECAN



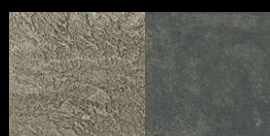
WALNUT



TERR-COTTA



RUSTIC RED



GRAY

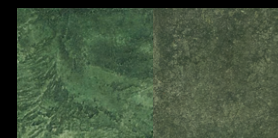
Specialty Colors



GOLD



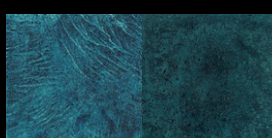
SAGE



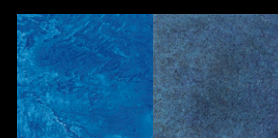
EMERALD



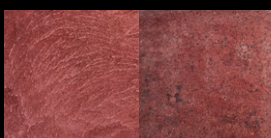
ORANGE



TEAL



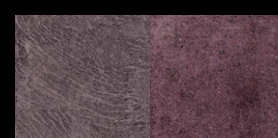
OCEAN



RUBY



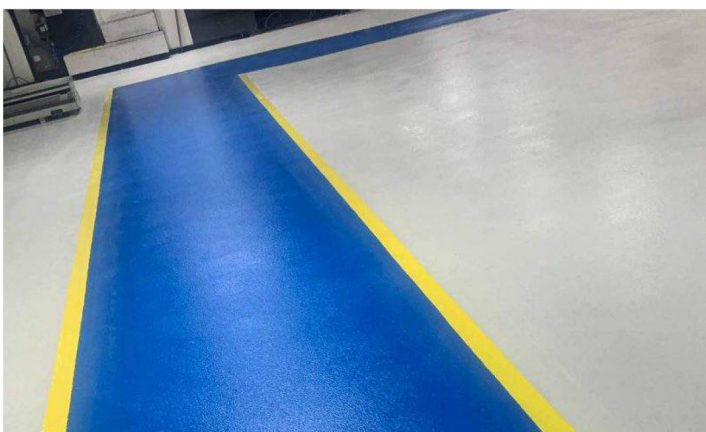
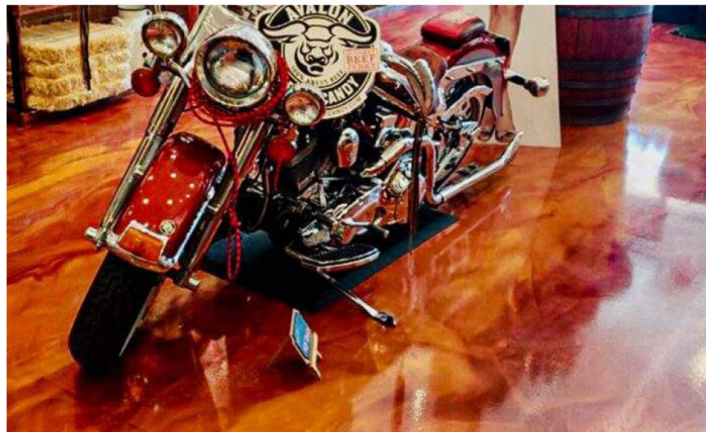
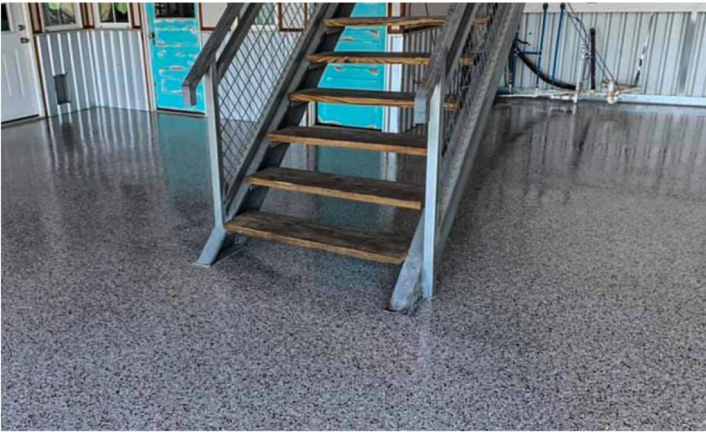
BLACK



PLUM

Special Colors are available by request only and are 30% more than Standard Colors.

NOTE: This Color Chart provides close representations of the colors. Slight differences may occur in color and appearance.



MASTER
PRODUCT
CATALOG



WARRANTY
E2U
INDUSTRIAL
EPOXY2U
BEAUTIFUL
CREATIVE
GARAGE
STREET
EASY
INSTALL
FAST
CLIP
ONE-DAY